

UV Inkjet Printer  
**G-LINE**



# Setting the *Gold* Standard in Productivity



**THE G-LINE BY KIRK-RUDY**

**THE G-LINE BY KIRK-RUDY**

## High-Resolution **Variable Data Printing**



### PERFORMANCE & VERSATILITY

*The G-LINE UV Curable Printers combine Kirk-Rudy's proven engineering with advanced variable data printing technology, offering precision, speed, and versatility in 2.13" and 4.26" print widths.*

Our products embody our long standing tradition of innovation and quality



**Kirk-Rudy**  
www.kirkrudy.com



## High-Speed Precision UV Inkjet Printing

G-LINE UV Curable Printers offer precision and versatility for variable data printing. Capable of printing barcodes, 2D/QR codes, numbering, logos, and high-resolution graphics, they handle diverse applications with ease. Ideal for high-volume direct marketing, secure data printing, and business forms, the G-LINE delivers sharp, professional results on various substrates and packaging materials.

Resolution	Maximum Speed	
	Feet Per Min.	Meters Per Min.
600 dpi	450	137
300 dpi	900	274
150 dpi	1200	356



### Effortless Integration and Operational Advantages

- Seamless Workflow Integration
- Scalable Configuration
- Flexible Mounting Options
- User-Friendly Operation
- Minimal Downtime
- Compact Design
- High-Capacity Ink Delivery
- Enhanced Print Alignment
- Environmental Benefits

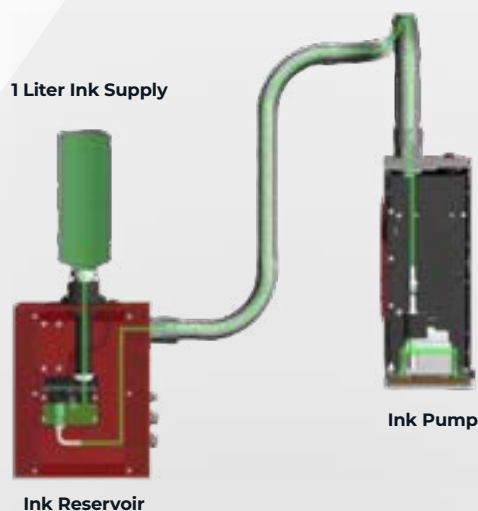
Feature	Details
<b>Print Technology</b>	Piezo
<b>Max Print Width</b>	2.13" (G2) or 4.26" (G4)
<b>Resolution</b>	Up to 600 dpi
<b>Smallest Font Size</b>	3pt
<b>Ink Type</b>	UV Curable
<b>Drop Levels</b>	1 to 3 (7pl / 14pl / 21pl)
<b>Frequency Response</b>	60 kHz
<b>Communication</b>	Ethernet
<b>Power Requirements</b>	240/115 V AC
<b>Warranty</b>	6 Months
<b>Custom Colors</b>	Yes

## Patented Ink Delivery System

The G-LINE's advanced Ink Delivery System (IDS) is designed to provide unmatched reliability and superior print quality. This sophisticated system ensures a continuous and consistent ink supply directly from the ink reservoir to the printhead, even during high-speed printing. By eliminating common failure points like valves, air sensors, and multiple connections, the G-LINE minimizes maintenance needs and maximizes uptime.

### Key Features of the IDS

- **Single Pump and Sensor:** Ensures ultimate reliability with streamlined components.
- **Enhanced Meniscus Accuracy:** Optimized for higher printing speeds and precise ink placement.
- **Print Orientation Flexibility:** Not dependent on gravity, enabling printing in any direction—down, sideways, or even upside down.
- **Zero Maintenance:** Requires no flushing or filter changes reducing operational downtime and costs.
- **Hot-Swappable Ink Reservoirs:** 1-liter ink supply supports long production runs, ensuring seamless operation.
- **Lower Operational Costs:** More cost-effective than cartridge-based systems, making it ideal for high-volume, demanding print applications.



This innovative system is engineered for high performance, delivering consistent results across a variety of substrates while significantly lowering operational costs.

## Real-World Applications

The G-LINE UV Curable Printers deliver precision, speed, and reliability for diverse applications, excelling in high-volume and variable data printing across a variety of markets.

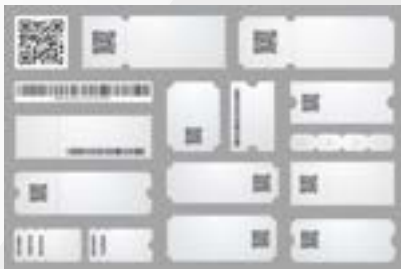
### Direct Marketing

The G-LINE thrives in high-volume mailing, producing sharp addresses, barcodes, and personalized data at high speeds to enhance direct mail campaigns effectively.



### Security Printing

With unparalleled accuracy for barcodes, QR codes, and serial numbers, the G-Line meets the highest standards for anti-counterfeit and traceability needs, making it ideal for government, pharmaceutical, and brand protection applications.



### Labels and Tickets

Perfect for labels and tickets, the G-LINE delivers crisp text and vibrant graphics on various materials, supporting efficient, large-scale production for industries like consumer goods, entertainment, and logistics.



### Packaging

The G-LINE is a powerful solution for printing directly on packaging, from retail boxes to industrial cartons. With its ability to handle a variety of substrates and deliver vibrant, long-lasting prints, the G-LINE helps brands create professional, eye-catching packaging that stands out on the shelf.

